

# English Courses in England 2025



***75 years' - teaching English to the world!***

# Learning the Anglo-Continental way

## Why learn English at Anglo-Continental?

Anglo-Continental is an established English language school with 75 years' experience in teaching English to students from across the globe. The school was founded in 1950 and today our courses are regularly inspected and accredited by The British Council.

**Our English language programmes** have been developed over 75 years, with the emphasis on our students' individual requirements:

- Short-term and long-term courses to meet every need, including internationally recognised examinations
- Diagnostic entry testing for accurate placement
- Friendly, qualified and experienced teachers to help you with every aspect of your studies
- Tuition at all levels from Beginner to Advanced
- Modern techniques and real-life practice to build your confidence and help you to learn more easily
- Individual consultation with your personal teacher
- Special guidance and advice for academic study programme students and for university entry

## Our Teachers

Having a recognised diploma-level qualification in teaching English to speakers of other languages is a requirement for our permanent teachers. In addition to this, they will also have extensive teaching experience in a variety of professional areas. It is a minimum requirement that teachers have a recognised English language teaching qualification i.e Cambridge CELTA, Trinity College TESOL Certificate or equivalent. Most teachers have a degree level qualification.

Within our established long-term team, a number of teachers have Masters level qualifications, some have qualified teacher status (QTS) and some have specialist subject qualifications. Many of these teachers have positions of responsibility according to their areas of expertise.

## Our Mission

Excellence in English language teaching, training and testing – putting the student first.



Anglo-Continental English Language Levels	CEFR*	IELTS	TOEFL (IBT)
Beginner to Elementary	A1	2.5 - 3.0	-
Pre-Intermediate	A2	3.5 - 4.0	-
Intermediate	B1	4.5 - 5.0	32 - 45
Upper Intermediate	B2	5.5 - 6.5	46 - 93
Advanced	C1	7.0 - 7.5	94 - 109
Proficiency to Near Native	C2	8.0 - 9.0	110 - 120

\* CEFR = Common European Framework



# Contents

	Pages
<b>Welcome to Bournemouth</b>	4 - 5
<b>Welcome to Anglo-Continental</b>	6 - 7
<b>General English Programme</b>	8 - 10
<b>Academic Study Programme</b>	11 - 13
<b>Examination Programme</b> Preparation courses for:	14 - 17
<ul style="list-style-type: none"> <li>• IELTS</li> <li>• B1 Preliminary</li> <li>• B2 First</li> <li>• C1 Advanced</li> </ul>	
<b>Business and Specialised Programme</b> English for:	18 - 21
<ul style="list-style-type: none"> <li>• Business</li> <li>• Medical Professionals</li> <li>• Medical Students</li> <li>• Law</li> </ul>	
<b>Executive Programme</b>	22 - 25
<ul style="list-style-type: none"> <li>• Mini Groups</li> <li>• Mini Group plus Individual Tuition</li> <li>• Intensive Individual Tuition</li> </ul>	
<b>Club 50+ Programme</b>	26 - 27
<b>Teacher Training Programme</b>	28 - 29
<b>Online English lessons</b>	30 - 32
<b>Vacation Programme</b> <b>Ages 16 - 17</b>	33 - 39
<ul style="list-style-type: none"> <li>• General English</li> <li>• IELTS and General English</li> </ul>	
<b>Young Learners and Teenagers Programme</b> <b>Ages 10 - 16</b>	40 - 43
<ul style="list-style-type: none"> <li>• General English</li> </ul>	
<b>Parent and Child Supplement</b>	44
<b>Accommodation and student support</b>	45 - 49
<b>Excursions, activities, leisure and sports</b>	50 - 53
<b>Transfer services</b>	54 - 55
<b>Conditions of enrolment</b>	56 - 57
<b>General information</b>	58 - 59
<b>Aviation Prospectus</b>	60



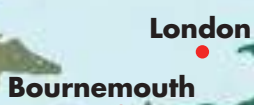


# Bournemouth



## Why Bournemouth?

- **Number one choice for students to study English outside of the capital**
- **Less than two hours from London**
- **University town**
- **Safe and easy to travel around with good transport links**
- **12 kilometres of Blue Flag and Seaside award-winning sandy beaches**
- **Shops, restaurants, cafés, cinemas, night clubs and theatres**
- **An extensive range of sports and leisure activities**
- **Beautiful parks and gardens**
- **World Heritage Jurassic Coastline**
- **New Forest National Park**
- **Poole's Historic Natural Harbour - largest in Europe**









# General English Programme

Our Intensive courses have been developed over many years of teaching experience. Innovative and communicative teaching methods are used and form the basis of our teaching. Our General English Programme offers a choice of courses for everyone who needs an improved level of English for academic, social or professional reasons.

## Your choice of courses

When you enrol, you can select the number of lessons per week which suits you best, and the course duration which meets your needs. You can be sure that, whether you are a complete beginner, or whether you already have a good understanding of the language, there will be a class suitable for you.

## Your class

You will study in a lively international atmosphere with others whose levels of English are similar to your own. You will be taught by a team of two or three teachers, who encourage participation and interaction between members of the group - and English is the only language you will use!

## Your lessons

Your lessons will be interesting and effective, with a variety of activities to develop your confidence, knowledge and skills:

- presentation and practice of new language
- rapid development of oral fluency, accuracy and conversation skills
- efficient development of listening, reading and writing skills
- extension of vocabulary, structure and usage

If you follow a course of 30 lessons per week, you will have the benefit of the **English for Success** Programme.

Outside your scheduled timetable, you will be able to use the multi-media learning centre and private study facilities.



## Programme features

- Intensive English language tuition
- All levels from Beginner to Advanced
  - Flexible entry dates
- **English for Success** Programme
  - Free access to the multi-media learning centre
- Virtual learning environment - eAnglo



# Intensive Courses 2025

Course number	G-1.20	G-1.30
<b>Lessons per week</b> (lesson duration: 45 minutes)	<b>20</b> <b>20 Lessons</b> of structured English language tuition with practice of: - listening - speaking - reading - writing - grammar - vocabulary	<b>30</b> <b>20 Lessons</b> as G-1.20 <b>Plus</b> <b>10 Lessons - English for Success</b> Develop general communication skills with the English for <b>Success Programme</b> including focus on: - Speaking and Listening for Success - Writing and Reading for Success
<b>Language levels</b>	Beginner* to Advanced	Beginner* to Advanced
<b>CEFR levels</b>	A1* - C1	A1* - C1
<b>Class size</b>	Average 10 (max. 15)	Average 10 (max. 15)
<b>Minimum age</b>	16	16
<b>Course duration (weeks)</b>	2 - 60	2 - 60
<b>Courses held between</b>	6 January - 19 December	6 January - 19 December
<b>Course fees</b>	British Pounds Sterling (£)	British Pounds Sterling (£)
<b>First 2 weeks</b>	770	1010
<b>Each additional week</b>	295	415
<b>Reduced course fees</b> available for courses of 20 weeks or more (pages 10 - 13)		
<b>Accommodation fees</b> British Pounds Sterling (£)	<b>18+ Standard homestay - single room</b> <b>16-17 year olds - Standard homestay - twin room</b> including under 18s supplement	
<b>First 2 weeks</b>	470	 Bed and breakfast available. See page 47
<b>Each additional week</b>	200	
<b>High season supplement</b> (15 June to 2 August - per week)	50	
<b>Single room supplement for 16-17 year olds</b> (optional - per week)	30	
<b>Pre-book Saturday excursions</b> (14 June to 16 August - optional per week)	60	

## Course fees include...

- Enrolment fee
- Entry test
- Tuition
- Textbooks and teaching materials
- Individual tutorials in the middle and at the end of each level
- Virtual learning environment - eAnglo
- Multi-media learning centre for personal study
- Educational Advisory Service
- Student card
- Certificate of Studies
- Orientation on first day
- Wi-Fi
- Sports and leisure activities information available online:  
[www.anglo-continental.com/leisure.html](http://www.anglo-continental.com/leisure.html)
- Services of the Student Support team

## Standard homestay accommodation fees include...

- 18+ single room from the Sunday before course commencement to the Sunday after its completion
- 16-17 year olds twin room from the Sunday before course commencement to the Sunday after its completion.
- Accommodation fees include an under 18s supplement for monitoring
- Breakfast Monday to Sunday
- Evening meal Monday to Sunday
- Light lunch Saturday and Sunday
- Hot lunches may be purchased in the Anglo-Continental Student Centre
- Light laundry - once per week
- Wi-Fi

For further details of accommodation see pages 46 - 47.

## Please note

- Course G-1.20 may have lessons in the afternoon on alternative weeks.
- The fees specified for these courses are valid from 1 January to 31 December 2025. For enrolments which commence or continue into the following year, revised fees will apply.

## Airport transfers

- See pages 54 - 55.



**These are prices for individual students. Contact us for a group quotation.**

## Online Lessons


If you wish to take online lessons before or after completion of your course please refer to pages 30 - 32.

## Course entry dates 2025 G-1.20, G-1.30

January	February	March	April	May	June	July	August	September	October	November	December
6*, 13, 20, 27	3*, 10, 17, 24	3*, 10, 17, 24, 31*	7, 14, 22, 28*	6, 12, 19, 27*	2, 9*, 16, 23*, 30	7*, 14, 21*, 28	4*, 11, 18*, 26	1*, 8, 15, 22, 29*	6, 13, 20, 27*	3, 10, 17, 24*	1, 8

\* Beginners may start their courses only on the entry dates marked with asterisks (\*)

# Long-Term Intensive Courses 2025

Course number	G-1.20L	G-1.30L
<b>Lessons per week</b> (lesson duration: 45 minutes)	<b>20</b>	<b>30</b>
	<b>20 Lessons</b> of structured English language tuition with practice of: - listening - speaking - reading - writing - grammar - vocabulary	<b>20 Lessons</b> as G-1.20 <b>Plus</b> <b>10 Lessons - English for Success</b> Develop general communication skills with the English for <b>Success Programme</b> including focus on: - Speaking and Listening for Success - Writing and Reading for Success
<b>Language levels</b>	Beginner* to Advanced	Beginner* to Advanced
<b>CEFR levels</b>	A1* - C1	A1* - C1
<b>Class size</b>	Average 10 (Max. 15)	Average 10 (Max. 15)
<b>Minimum age</b>	16	16
<b>Course duration (weeks)</b>	20 - 60	20 - 60
<b>Courses held between</b>	6 January - 19 December	6 January - 19 December
<b>Reduced course fees</b>	British Pounds Sterling (£)	British Pounds Sterling (£)
<b>First 20 weeks</b>	5280	7280
<b>Each additional week</b>	255	355
	Students who enrol for Long-Term Intensive Courses receive help and guidance from our educational advisers and benefit from these specially reduced fees to help them achieve their academic or professional aims. Additional conditions apply, see page 57.	
<b>Accommodation fees</b> British Pounds Sterling (£)	<b>18+ Standard homestay - single room</b> <b>16-17 year olds - Standard homestay - twin room</b> <b>including under 18s supplement</b>	
<b>First 2 weeks</b>	470	
<b>Each additional week</b>	200	
<b>High season supplement</b> (15 June to 2 August - per week)	50	
<b>Single room supplement for 16-17 year olds</b> (optional - per week)	30	
<b>Pre-book Saturday excursions</b> (14 June to 16 August - optional per week)	60	

## Course fees include...

- Enrolment fee
- Entry test
- Tuition
- Textbooks and teaching materials
- Individual tutorials in the middle and at the end of each level
- Virtual learning environment - eAnglo
- Multi-media learning centre for personal study
- Educational Advisory Service
- Student card
- Certificate of Studies
- Orientation on first day
- Wi-Fi
- Sports and leisure activities information available online:  
[www.anglo-continental.com/leisure.html](http://www.anglo-continental.com/leisure.html)
- Services of the Student Support team

## Standard homestay accommodation fees include...

- 18+ single room from the Sunday before course commencement to the Sunday after its completion
- 16-17 year olds twin room from the Sunday before course commencement to the Sunday after its completion.
- Accommodation fees include an under 18s supplement for monitoring
- Breakfast Monday to Sunday
- Evening meal Monday to Sunday
- Light lunch Saturday and Sunday
- Hot lunches may be purchased in the Anglo-Continental Student Centre
- Light laundry - once per week
- Wi-Fi

For further details of accommodation see pages 46 - 47.

## Please note

- Course G-1.20L may have lessons in the afternoon on alternative weeks.
- The fees specified for these courses are valid from 1 January to 31 December 2025. For enrolments which commence or continue into the following year, revised fees will apply.

## Airport transfers

- See pages 54 - 55.

## One-to-One Lessons

If you wish to supplement your course with one-to-one lessons please contact us.

Lesson duration:

45 minutes.

£ 64 per lesson.

## Course entry dates 2025 G-1.20L, G-1.30L

January	February	March	April	May	June	July	August	September	October	November	December
6*, 13, 20, 27*	3*, 10, 17, 24	3*, 10, 17, 24, 31*	7, 14, 22, 28*	6, 12, 19, 27*	2, 9*, 16, 23*, 30	7*, 14, 21*, 28	4*, 11, 18*, 26	1*, 8, 15, 22, 29*	6, 13, 20, 27*	3, 10, 17, 24*	1, 8

\* Beginners may start their courses only on the entry dates marked with asterisks (\*)



# Academic Study Programme

The Academic Study Programme is for students who need high standards of English to achieve their educational or career objectives. Your programme, leading to the Anglo-Continental Diploma in English, helps you to improve your English at an appropriate rate through the various language levels to Advanced (C1).

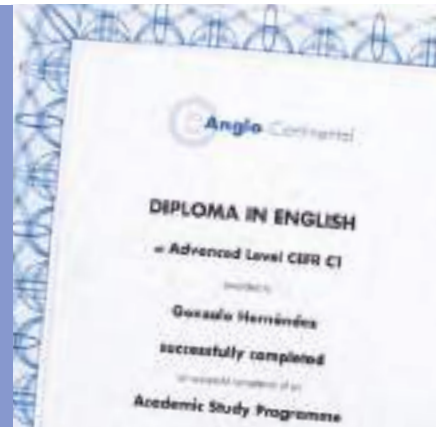
## Personal Study Programme

Educational Advisers will assist you in choosing your study options based on your language level and will monitor your progress throughout your course. They will ensure that your rate of progress allows you to maximise your learning objectives.

If you plan to continue your education in Britain, our Advisers will even guide you through the process of applying for a place at the university of your choice.

## Study options

Your language knowledge and skills are assessed and developed within an intensive general English course, supplemented by a number of special study options. Your progress will be carefully monitored throughout the programme. You will also have regular consultations with your Course Coordinator to ensure that the course meets your needs in order to obtain the best possible results.



## Programme Features

- Individual Tutorials with the Course Coordinator
- Progress reports every 12 weeks, on request
  - Advice on further studies in the UK
  - Variety of course combinations
  - Examination options
- Choice of special options as you progress
- Virtual learning environment - eAnglo

# Academic Study Courses 2025

Course number	A-1.30	
<b>Lessons per week</b> (lesson duration: 45 minutes)	<b>30</b>	
<b>Special study options</b>	Yes (See page 13)	
<b>Examination practice options</b>	Yes (See page 13)	
<b>Language levels</b>	Beginner* to Advanced	
<b>CEFR levels</b>	A1* - C1	
<b>Class size</b>	Average 10 (Max.15)	
<b>Minimum age</b>	16	
<b>Course duration (weeks)</b>	20 - 60	
<b>Course held between</b>	6 January - 19 December	
<b>Reduced course fees</b>	British Pounds Sterling (£)	
<b>First 20 weeks</b>	7785	
<b>Each additional week</b>	370	
<b>Reduced course fees for long-term study</b>		
Students who enrol for the Academic Study Programme benefit from these specially reduced fees to help them achieve their academic or professional aims - and help and guidance from our educational advisers. Additional conditions apply, see page 57.		
<b>Accommodation fees</b> British Pounds Sterling (£)	<b>18+ Standard homestay - single room</b> <b>16-17 year olds - Standard homestay - twin room including under 18s supplement</b>	
<b>First 2 weeks</b>	470	
<b>Each additional week</b>	200	
<b>High season supplement</b> (15 June to 2 August - per week)	50	
<b>Single room supplement for 16-17 year olds</b> (optional - per week)	30	
<b>Pre-book Saturday excursions</b> (14 June to 16 August - optional per week)	60	



## Course fees include...

- Enrolment fee
- Entry test
- Tuition and special study and examination options
- Textbooks and teaching materials
- Virtual learning environment - eAnglo
- Individual teacher tutorials in the middle and at the end of each level
- Individual Course Coordinator tutorials every 8 weeks
- Progress report every 12 weeks, on request
- Multi-media learning centre for personal study
- Educational Advisory Service
- Student card
- Certificate of Studies and Anglo-Continental Diploma (subject to satisfactory completion)
- Orientation on first day
- Wi-Fi
- Sports and leisure activities information available online:  
[www.anglo-continental.com/leisure.html](http://www.anglo-continental.com/leisure.html)
- Services of the Student Support team

## Standard homestay accommodation fees include...

- 18+ single room from the Sunday before course commencement to the Sunday after its completion
- 16-17 year olds twin room accommodation fees include an under 18s supplement for monitoring
- Breakfast Monday to Sunday
- Evening meal Monday to Sunday
- Light lunch Saturday and Sunday
- Hot lunches may be purchased in the Anglo-Continental Student Centre
- Light laundry - once per week
- Wi-Fi

For further details of accommodation see pages 46 - 47.

## Please note

- The fees specified for these courses are valid from 1 January to 31 December 2025. For enrolments which commence or continue into the following year, revised fees will apply.

## Airport transfers

- See pages 54 - 55.

## Course entry dates 2025 A-1.30

January	February	March	April	May	June	July	August	September	October	November	December
6*, 13, 20, 27*	3*, 10, 17, 24	3*, 10, 17, 24, 31*	7, 14, 22, 28*	6, 12, 19, 27*	2, 9*, 16, 23*, 30	7*, 14, 21*, 28	4*, 11, 18*, 26	1*, 8, 15, 22, 29*	6, 13, 20, 27*	3, 10, 17, 24*	1, 8

\* Beginners may start their courses only on the entry dates marked with asterisks (\*)



A Personal Study Programme is developed at the start of your Academic Study Course. Based on your level of English, the duration of your course and your goals, assistance will be given in helping you to select the right combination of study options from below:

**General English + English for Success** (from Beginner level)

- 10 lessons of Speaking and Listening for Success + 20 lessons of General English
- 10 lessons of Writing and Reading for Success + 20 lessons of General English

**Academic Preparation** (from Upper Intermediate level) Subject to availability.

- 10 lessons of Academic Preparation for school, college or university + 20 lessons of General English

**Examination Preparation/Practice** Subject to availability.

- 10 lessons of Examination Preparation for IELTS (from Pre-Intermediate level) + 20 lessons of General English
- 10 lessons of Examination Preparation for B1 Preliminary (from Intermediate level) + 20 lessons of General English
- 10 lessons of Examination Preparation for B2 First (from Upper Intermediate level) + 20 lessons of General English
- 10 lessons of Examination Preparation for C1 Advanced (from Advanced level) + 20 lessons of General English

**Business and Specialised English** (from Intermediate level) Subject to availability.

- 10 lessons of English for Business + 20 lessons of General English
- 10 lessons of English for Medical Professionals + 20 lessons of General English
- 10 lessons of English for Medical Students + 20 lessons of General English
- 10 lessons of English for Law + 20 lessons of General English





# Examination Programme

At Anglo-Continental we successfully prepare our students for English language examinations, which are widely accepted in academic and commercial institutions throughout the world. We provide courses in preparation for mainstream examinations such as the International English Language Testing System (IELTS) and the University of Cambridge B2 First.

Courses are designed to develop the necessary skills relevant to the particular examination and to present and practise language appropriate to the students' needs. Timed practice tests provide an idea of what it is like to work under pressure during a real examination.

## **Examination Practice plus Intensive Courses**

These courses aim to raise your level of general English by providing 20 lessons per week of intensive English language study. The general English classes will develop your confidence, knowledge and skills in English. These classes are combined with 10 lessons per week of practice for the examination of your choice: IELTS, B1 Preliminary, B2 First and C1 Advanced. Teachers will familiarise students with the format of the examination and will introduce strategies for dealing with typical questions.



## **Programme Features**

- Examination preparation and practice for IELTS, B1 Preliminary, B2 First and C1 Advanced
- Individual Tutorials with the teacher and the Course Coordinator
- Free access to the multi-media learning centre
- Virtual learning environment - eAnglo

# IELTS Examination Practice + Intensive Course 2025

Course number	X-2.30	
<b>Course type</b>	<b>IELTS Examination Practice + Intensive Course</b>	
<b>Examination board</b>	Cambridge English Language Assessment and The British Council - See note A	
<b>Examination practice lessons</b>	10	
<b>General English lessons</b>	20	
<b>Total lessons per week</b> <small>(lesson duration: 45 minutes)</small>	<b>30</b>	
<b>Language levels for entry</b>	Pre-Intermediate See note B	
<b>CEFR levels for entry</b>	A2 See note B	
<b>Examination practice class size</b>	Average 8 (Max. 12)	
<b>Intensive English class size</b>	Average 10 (Max. 15)	
<b>Minimum age</b>	16	
<b>Course duration (weeks)</b>	2 - 20	
<b>Courses held between</b>	6 January - 19 December	
Course fees	British Pounds Sterling (£)	
<b>2 weeks</b>	1055	
<b>4 weeks</b>	1875	
<b>8 weeks</b>	3515	
<b>12 weeks</b>	5155	
<b>Each additional week</b>	410	
Accommodation fees	18+ Standard homestay - single room 16-17 year olds - Standard homestay - twin room including under 18s supplement	
<b>First 2 weeks</b>	470	
<b>Each additional week</b>	200	
<b>High season supplement</b> <small>(15 June to 2 August - per week)</small>	50	
<b>Single room supplement for 16-17 year olds</b> <small>(optional - per week)</small>	30	
<b>Pre-book Saturday excursions</b> <small>(14 June to 16 August - optional per week)</small>	60	

## Course fees include...

- Enrolment fee
- Entry test
- Tuition
- Textbooks and teaching materials
- Virtual learning environment - eAnglo
- Individual tutorials in the middle and at the end of each level (only applicable to the General English element of the course)
- Multi-media learning centre for personal study
- Educational Advisory Service
- Student card
- Certificate of Studies
- Orientation on first day
- Wi-Fi
- Sports and leisure activities information available online:  
[www.anglo-continental.com/leisure.html](http://www.anglo-continental.com/leisure.html)
- Services of the Student Support team

## Standard homestay accommodation fees include...

- 18+ single room from the Sunday before course commencement to the Sunday after its completion
- 16-17 year olds twin room accommodation fees include an under 18s supplement for monitoring
- Breakfast Monday to Sunday
- Evening meal Monday to Sunday
- Light lunch Saturday and Sunday
- Hot lunches may be purchased in the Anglo-Continental Student Centre
- Light laundry - once per week
- Wi-Fi

For further details of accommodation see pages 46 - 47.

## Examination fees

- The examination fees 2025 are not included in the course fees. They are published on the website from October 2024.

## Please note

- The fees specified for these courses are valid from 1 January to 31 December 2025. For enrolments which commence or continue into the following year, revised fees will apply.

## Airport transfers

- See pages 54 - 55.

## Notes

**A** If you plan to take an examination, we recommend that you register for the examination in advance. Please check the website for examination closing dates:  
[www.anglo-continental.com/examination](http://www.anglo-continental.com/examination)

**B** If you would like an indication of your English language level, you can take an online test. Final acceptance is subject to our examination pre-test or our entry test held at the school. If you have not yet reached the required level, you can first enrol for a period of preparation on a General English Course. See pages 8 - 10.

## Course entry dates 2025 X-2.30


January	February	March	April	May	June	July	August	September	October	November	December
6	3	3, 31	28	27	9, 23	7, 21	11, 26	15	13	10	8



# B1 Preliminary Examination Practice + Intensive Course

# B2 First Examination Practice + Intensive Course

# C1 Advanced Examination Practice + Intensive Course 2025

Course number	X-3.30	X-4.30	X-5.30
<b>Course type</b>	<b>B1 Preliminary Examination Practice + Intensive Course</b>	<b>B2 First Examination Practice + Intensive Course</b>	<b>C1 Advanced Examination Practice + Intensive Course</b>
<b>Examination board</b>	Cambridge English Language Assessment	Cambridge English Language Assessment	Cambridge English Language Assessment
<b>Examination practice lessons</b>	10	10	10
<b>General English lessons</b>	20	20	20
<b>Total lessons per week</b> <small>(lesson duration: 45 minutes)</small>	<b>30</b>	<b>30</b>	<b>30</b>
<b>Language levels for entry</b>	Intermediate See note B on page 15	Upper Intermediate See note B on page 15	Advanced See note B on page 15
<b>CEFR levels for entry</b>	B1 - See note B on page 15	B2 - See note B on page 15	C1 - See note B on page 15
<b>Intensive English class size</b>	Average 10 (Max. 15)	Average 10 (Max. 15)	Average 10 (Max. 15)
<b>Examination practice class size</b>	Average 8 (Max. 12)	Average 8 (Max. 12)	Average 8 (Max. 12)
<b>Minimum age</b>	16	16	16
<b>Course duration (weeks)</b>	4 - 16	8	8 or 12
<b>Courses held between</b>	6 January - 19 December	22 April - 13 June 13 October - 5 December	24 March - 13 June 15 September - 5 December
<b>Course fees</b>	British Pounds Sterling (£)	British Pounds Sterling (£)	British Pounds Sterling (£)
<b>4 weeks</b>	1875	~	~
<b>8 weeks</b>	3515	3515	3515
<b>12 weeks</b>	5155	~	5155
<b>Each additional week</b>	410	~	~
<b>Accommodation fees</b> British Pounds Sterling (£)	<b>18+ Standard homestay - single room</b> <b>16-17 year olds - Standard homestay - twin room</b> including under 18s supplement		
<b>First 2 weeks</b>	470		
<b>Each additional week</b>	200		
<b>High season supplement</b> <small>(15 June to 2 August - per week)</small>	50		
<b>Single room supplement for 16-17 year olds</b> <small>(optional - per week)</small>	30		
<b>Pre-book Saturday excursions</b> <small>(14 June to 16 August - optional per week)</small>	60		

## Course entry dates 2025

<b>X-3.30</b>											
January 6	February 3	March 3, 31	April 28	May 27	June 23	July 21	August 18	September 15	October 13	November 10	December 8
<b>X-4.30</b>											
January ~	February ~	March ~	April 22	May ~	June ~	July ~	August ~	September ~	October 13	November ~	December ~
<b>X-5.30</b>											
January ~	February ~	March 24	April 22	May ~	June ~	July ~	August ~	September 15	October 13	November ~	December ~





# Examinations

The following examinations can be arranged:

- IELTS - International English Language Testing System
- A2 Key
- B1 Preliminary
- B2 First
- C1 Advanced
- C2 Proficiency
- TOEFL - Test of English as a Foreign Language
- OET - Occupational English Test
- BEC - Business English Certificates
- TKT - Teaching Knowledge Test

For examination dates and fees visit the website: [www.anglo-continental.com/examination](http://www.anglo-continental.com/examination). The examination dates and fees 2025 are published on the website from October 2024.

Some of the examinations are subject to a minimum number of candidates.

Additional examination entry dates may be available. Please enquire for further details.



Anglo-Continental is an Examination Centre for:

- OET - Occupational English Test
- TKT - Teaching Knowledge Test
- TEAP - Test of English for Aviation Personnel

 **CAMBRIDGE ENGLISH**  
Language Assessment  
Authorised Centre



# Business and Specialised Programme

For many business and professional people, the ability to speak English is a necessity for success. At Anglo-Continental, we offer a choice of scheduled and specially arranged courses to meet this need.

## Scheduled Courses

Our short business and specialised courses cover the following areas:

- English for Business
- English for Medical Professionals
- English for Medical Students
- English for Law

They are suitable for people at all levels of an organisation, from administrative staff to management, and for students preparing for professional employment. They combine 20 lessons of intensive general English tuition with 10 lessons each week developing the language of your chosen specialisation - arranged in independent modules so that you can enrol for a period of time convenient to you. The essential language used in these specialised areas is listed on page 20.

## Business and Specialised Lessons

Your teachers, who have background knowledge of the subject of your choice, will use a wide variety of methods and materials, including authentic texts, documents and recorded material appropriate to your work. Role-play, student presentations, and guided and free discussion will improve your fluency and give you the realistic practice you need.

### One-to-One Online Lessons

If you wish to take online lessons before or after completion of your course please refer to pages 30 - 32.





### **Additional Study**

Homework (written assignments, preparation and revision) is an integral part of the course. We also recommend that some time should be devoted to additional study using eAnglo and the multi-media learning centre. Free wireless internet access is also available on campus.

### **Language Level for Entry**

If you would like an indication of your English language level, you can take an online test before you enrol. This will be used as a guide and final acceptance is subject to our entry test held at the school. If you are not yet at the minimum level required, you will be transferred to the General English Programme.

### **Pre-Training Assessment**

Final acceptance on the course is subject to our pre-training assessment. This is an assessment of the suitability of the course according to the background and qualifications of the client.

### **Group Bookings**

Business and Specialised Courses are available for individuals and groups. Please contact us for a group quotation.

### **Guest Speakers**

Once every two weeks a guest speaker will be organised.



### **Sample Timetables**

Download sample Business and Specialised timetables from the website:

[www.anglo-continental.com/bus-spec.pdf](http://www.anglo-continental.com/bus-spec.pdf)



### English for Business

- Business background
- Customer care
- Networking and socialising
- Business correspondence and communication
- Negotiating business agreements
- Business proposals and quotations
- Meetings, conferences and presentations
- Preparing and analysing reports
- Curriculum vitae preparation
- Interviews and appraisals
- Telephoning and video conferencing skills
- Email communication

### English for Medical Professionals

- Communication with patients and medical staff
- Explaining medical procedures
- Conducting medical examinations
- Taking histories and writing reports
- The hospital environment
- Care of medical and surgical patients
- Working within specialties
- Authentic medical films
- Medication – side effects, dosages and contra-indications
- Using medical documents

### English for Medical Students

- Human anatomy
- Diseases and symptoms
- Taking histories
- Conducting medical examinations
- Medical publications and research
- Authentic medical films
- The World Health Organisation
- Reading and writing case histories
- Medication – side effects, dosages and contra-indications
- Evaluation of online medical websites and resources

### English for Law

- Legal principles and practice
- International law
- Legal concepts, rights and obligations
- Negotiating contracts and agreements
- Company and commercial law
- Interviewing and advising clients
- Considering evidence and preparing a brief
- Presenting your case and arguing points of law
- Conferences, meetings and presentations



### Programme Features

- Pre-training assessment
- Guest speakers
- Virtual learning environment - eAnglo
- Free access to the multi-media learning centre

# Intensive Courses plus English for Business and Specialised Subjects 2025

Course number	B-1.30	S-5.30A	S-5.30B	S-6.30
<b>Course type</b>	<b>English for Business</b>	<b>English for Medical Professionals</b>	<b>English for Medical Students</b>	<b>English for Law</b>
<b>General English lessons</b>	20			
<b>Specialised lessons</b>	10			
<b>Total lessons per week</b> <small>(lesson duration: 45 minutes)</small>	<b>30</b>			
<b>Guest speaker</b>	1 every 2 weeks			
<b>Language levels for entry</b>	Intermediate to Advanced See note A			
<b>CEFR levels for entry</b>	B1 - C1 See note A			
<b>General English - class size</b>	Class average 10 (Max. 15)			
<b>Specialised English - group size</b>	Average 5 (Max. 8)			
<b>Minimum age</b>	18	21	18	18
<b>Course duration (weeks)</b>	2 - 4			
<b>Course fees</b>	British Pounds Sterling (£)			
<b>First 2 weeks</b>	1405			
<b>Each additional week</b>	575			
<b>Accommodation fees</b> <small>British Pounds Sterling (£)</small>	<b>Standard homestay - single room</b>		<b>Executive homestay - single room</b>	
<b>First 2 weeks</b>	470		700	
<b>Each additional week</b>	200		315	
<b>High season supplement</b> <small>(15 June to 2 August - per week)</small>	50		50	
<b>Pre-book Saturday excursions</b> <small>(14 June to 16 August - optional per week)</small>	60		60	

## Course fees include...

- Enrolment fee
- Pre-training assessment
- Entry test
- Tuition
- Textbooks and teaching materials
- Virtual learning environment - eAnglo
- Guest speaker
- Use of the Executive Centre and facilities
- Multi-media learning centre for personal study
- Educational Advisory Service
- Student card
- Certificate of Studies
- Orientation on first day
- Wi-Fi
- Sports and leisure activities information available online: [www.anglo-continental.com/leisure.html](http://www.anglo-continental.com/leisure.html)
- Services of the Student Support team

## Standard homestay accommodation fees include...

- Single room from the Sunday before course commencement to the Sunday after its completion
- Breakfast Monday to Sunday
- Evening meal Monday to Sunday
- Light lunch Saturday and Sunday
- Hot lunches may be purchased in the Anglo-Continental Student Centre
- Light laundry - once per week
- Wi-Fi

For further details of accommodation see pages 46 - 47.

## Airport transfers

- See pages 54 - 55.



## Notes

- A** If you would like an indication of your English language level, you can take an online test. Final acceptance is subject to our examination pre-test or our entry test held at the school. If you have not yet reached the required level, you can first enrol for a period of preparation on a General English Course. See pages 8 - 10.

## Course entry dates 2025

### B-1.30, S-5.30A, S-6.30

January	February	March	April	May	June	July	August	September	October	November	December
6, 20	3, 17	3, 17, 31	14, 28	12, 27	9, 23	7, 21	11, 26	8, 22	13, 27	10, 24	8*

\* 2 weeks only

### S-5.30B

January	February	March	April	May	June	July	August	September	October	November	December
6, 20*	~	~	~	~	9, 23	7, 21	11, 26*	~	~	~	~

\* 2 weeks only



# Executive Programme

The Anglo-Continental Executive Programme provides stimulating language training for busy professionals. It is also the ideal environment for adults who wish to improve their English for cultural and social purposes. The tuition is highly intensive and offers the most effective way of learning or developing your English in the shortest possible time.

## The Executive Centre

On this programme, you will study in our exclusive executive centre within our main campus. There are study rooms for mini groups and individuals and a comfortable private lounge for relaxation during your breaks – with computers and wireless internet access. Your specially selected teachers will ensure close attention to your educational needs.

## Your Choice of Courses

The centre offers four categories of courses:

- **Intensive Study in a Mini Group**, in which you work with a very small, select group of people with similar levels of English to your own.
- **Intensive Study in a Mini Group plus Individual Tuition**, which combines group study with one-to-one lessons to meet your own particular needs.
- **Intensive Individual Tuition**, where you work with your personal team of two or three teachers, one-to-one.



## Programme Features

- Pre-training assessment
- Optional preparation of a presentation with feedback from a teacher
  - Virtual learning environment - eAnglo
- Progress report and recommendations for further study on course completion
  - Exclusive use of computers in the executive lounge
- Use of the exclusive executive lounge
  - Lunch with a teacher
- Complimentary tea, coffee and biscuits

# Executive Courses 2025

Course number	E-1.20	E-1.30
<b>Course type</b>	<b>Intensive Study in a Mini Group</b>	
<b>General English lessons</b>	20	30
<b>Total lessons per week</b> <small>(lesson duration: 45 minutes)</small>	<b>20</b>	<b>30</b>
<b>Language levels for entry</b>	Beginner to Advanced See note A	
<b>CEFR levels for entry</b>	A1 - C1	
<b>General English - mini group size</b>	Average 2 (Max. 4)	
<b>Minimum age</b>	21	
<b>Lunch with a teacher</b>	Included	
<b>Course duration (weeks)</b>	1 - 60 See note A	
<b>Course fees</b>	British Pounds Sterling (£)	British Pounds Sterling (£)
<b>First week</b>	1070	1410
<b>Each additional week</b>	870	1210
<b>Accommodation fees</b> British Pounds Sterling (£)	<b>Executive homestay - single room</b>	
<b>First week</b>	385	
<b>Each additional week</b>	315	
<b>High season supplement</b> <small>(15 June to 2 August - per week)</small>	50	
<b>Pre-book Saturday excursions</b> <small>(14 June to 16 August - optional per week)</small>	60	

## Course fees include...

- Enrolment fee
- Pre-training assessment
- Entry test
- Tuition
- Textbooks and teaching materials
- Virtual learning environment - eAnglo
- Individual tutorial during your first week and every 2 or 4 weeks thereafter, depending on the length of your course
- End-of-course progress report
- Use of the Executive Centre lounge and facilities
- Multi-media learning centre for personal study
- Educational Advisory Service
- Student card
- Certificate of Studies
- Wi-Fi
- Lunch Monday to Friday (excluding public holidays) with a teacher
- Sports and leisure activities information available online: [www.anglo-continental.com/leisure.html](http://www.anglo-continental.com/leisure.html)
- Services of the Student Support team

## Executive homestay accommodation fees include...

- Single room from the Sunday before course commencement to the Sunday after its completion
- Breakfast Monday to Sunday
- Evening meal Monday to Sunday
- Light lunch Saturday and Sunday
- Exclusive use of a shower or bathroom and toilet facilities
- Light laundry - once per week
- Wi-Fi

For further details of accommodation see pages 46 - 47.

## Airport transfers

- See pages 54 - 55.

## Alternative accommodation

- Please see page 47.

## Notes

- A** Participants at beginner to elementary levels are recommended to enrol for a minimum of 2 weeks.

## Course entry dates 2025 E-1.20, E-1.30

January	February	March	April	May	June	July	August	September	October	November	December
6, 13, 20, 27	3, 10, 17, 24	3, 10, 17, 24, 31	7, 14, 22, 28	6, 12, 19, 27	2, 9, 16, 23, 30	7, 14, 21, 28	4, 11, 18, 26	1, 8, 15, 22, 29	6, 13, 20, 27	3, 10, 17, 24	1, 8

# Executive Courses 2025

Course number	E-2.30	E-2.40	E-3.20	E-3.30
<b>Course type</b>	<b>Intensive Study in a Mini Group plus Individual Tuition</b>		<b>Intensive Individual Tuition</b>	
<b>General English lessons</b>	20	30	~	~
<b>Individual lessons</b>	10	10	20	30
<b>Total lessons per week</b> <small>(lesson duration: 45 minutes)</small>	<b>30</b>	<b>40</b>	<b>20</b>	<b>30</b>
<b>Optional specialised individual tuition</b>	Yes See section below		Yes See section below	
<b>Language levels</b>	Beginner to Advanced See note A		Beginner to Advanced See note A	
<b>CEFR levels</b>	A1 - C1 See note A		A1 - C1 See note A	
<b>Mini group size</b>	Average 2 (Max. 4) (Plus individual tuition)		Individual tuition	
<b>Minimum age</b>	21		21	
<b>Lunch with a teacher</b>	Included		Included	
<b>Course duration (weeks)</b>	1 - 60		1 - 60	
<b>Specialised individual tuition</b>	<p>If your English language level is Pre-Intermediate or above, 10 lessons of your weekly individual tuition may focus on specialised individual tuition in the English of your own personal choice, selected from:</p> <ul style="list-style-type: none"> <li>• Aviation</li> <li>• Business</li> <li>• Examination Preparation</li> <li>• Finance</li> <li>• Human Resources</li> <li>• Legal Practice</li> <li>• Management</li> <li>• Marketing and Sales</li> <li>• Medical Practice</li> <li>• Military English</li> </ul> <p>If the specialised subject you require is not listed, please contact us to check its availability.</p>			
<b>Course fees</b>	British Pounds Sterling (£)		British Pounds Sterling (£)	
<b>First week</b>	1840	2180	1840	2530
<b>Each additional week</b>	1570	1910	1570	2260
<b>Accommodation fees</b> British Pounds Sterling (£)	<b>Executive homestay - single room</b>			
<b>First week</b>	385			
<b>Each additional week</b>	315			
<b>High season supplement</b> <small>(15 June to 2 August - per week)</small>	50			
<b>Pre-book Saturday excursions</b> <small>(14 June to 16 August - optional per week)</small>	60			

## Course fees include...

- Enrolment fee
- Pre-training assessment
- Entry test
- Tuition
- Textbooks and teaching materials
- Virtual learning environment - eAnglo
- Individual tutorial during your first week and every 2 or 4 weeks thereafter, depending on the length of your course
- End-of-course progress report
- Use of the Executive Centre lounge and facilities
- Multi-media learning centre for personal study
- Educational Advisory Service
- Student card
- Certificate of Studies
- Wi-Fi
- Lunch Monday to Friday (excluding public holidays) with a teacher
- Sports and leisure activities information available online: [www.anglo-continental.com/leisure.html](http://www.anglo-continental.com/leisure.html)
- Services of the Student Support team

## Executive homestay accommodation fees include...

- Single room from the Sunday before course commencement to the Sunday after its completion
- Breakfast Monday to Sunday
- Evening meal Monday to Sunday
- Light lunch Saturday and Sunday
- Exclusive use of a shower or bathroom and toilet facilities
- Light laundry - once per week
- Wi-Fi

For further details of accommodation see pages 46 - 47.

## Airport transfers

- See pages 54 - 55.

## Alternative accommodation

- Please see page 47.

## Notes

- A** Participants at beginner to elementary levels are recommended to enrol for a minimum of 2 weeks.

## Course entry dates 2025

**E-2.30, E-2.40 E-3.20, E-3.30**

January	February	March	April	May	June	July	August	September	October	November	December
6, 13, 20, 27	3, 10, 17, 24	3, 10, 17, 24, 31	7, 14, 22, 28	6, 12, 19, 27	2, 9, 16, 23, 30	7, 14, 21, 28	4, 11, 18, 26	1, 8, 15, 22, 29	6, 13, 20, 27	3, 10, 17, 24	1, 8



### One-to-One Online Lessons

If you wish to take online lessons after completion of your course please refer to pages 30 - 32.



### Specialised Individual Tuition (Courses E-2.30, E-2.40, E-3.20 and E-3.30)

If your English language level is Pre-Intermediate or above, 10 lessons of your weekly individual tuition may focus on specialised individual tuition in the English of your own personal choice, selected from the subjects listed on page 24. If you choose examination preparation, you can prepare for any of the examinations listed on page 17.

#### Learning Objectives

Having identified your objectives and established your level, we plan your course and then monitor your progress throughout your programme:

- Pre-training assessment form
- Entry test and needs analysis
- Regular individual tutorials
- Weekly review of your learning priorities

#### Personalised Learning

You do not need to worry if you have a low level of English or if it has been a long time since you studied in the classroom. Whether you are a beginner or a graduate in English, the teaching will be productive, enjoyable and appropriate to your needs.





# Great British Club 50+ Programme

More and more people in their fifties, sixties and beyond appreciate the attraction of a short, well-organised study programme - especially when it is combined with visiting and exploring new destinations. If you are fifty or over, this programme offers you the ideal opportunity to visit England for a stimulating and productive holiday.

## Your classes

- You will study in a class where the minimum age is fifty, providing there are sufficient students at your level attending the course. In periods where we have lower student numbers, you will be taught in our General English Programme G-1.20, which has no upper age limit.
- The classroom approach is to create an informal atmosphere for purposeful learning, conducted at a pace suitable for those who may not have been in a classroom for many years.
- Our friendly and approachable teachers will make the classes interesting and enjoyable and will use modern teaching methods and materials to build your confidence in speaking English.
- Group activities will be arranged to improve your comprehension and communication skills, such as guided and free conversation practice, role play and discussion of aspects of British and international life, customs and culture.
- Learn in an international environment and make friends with people from many other countries.
- Free access to the multi-media learning centre.

## Excursions, leisure activities

Outside the classroom, you will have the benefit of guided excursions to places of historical and cultural interest and of carefully arranged leisure activities. You will also have time for sightseeing and shopping on your own or with your new friends from the school.

## Your accommodation

We normally provide accommodation with selected homestay families so that you will have no worries about your welfare and your meals. If you prefer to be independent, we can recommend alternative accommodation such as hotels or guest houses to meet your needs.



## Programme Features

- Enjoyable English language tuition
- Virtual learning environment - eAnglo
- Relaxed conversation and discussion of current affairs and British life, customs and culture
  - From Elementary to Upper Intermediate level
- Special excursions and leisure activities
- Free access to the multi-media learning centre

# Great British Over 50s Course 2025

<b>Course number</b>	<b>F-1.20</b>	
<b>Course type</b>	<b>English Language and Cultural Activities</b>	
<b>Lessons per week</b> <small>(lesson duration: 45 minutes)</small>	<b>20</b>	
<b>Language levels</b>	Elementary to Upper Intermediate	
<b>CEFR levels</b>	A1 - B2	
<b>Class size</b>	Average 10 (Max.15)	
<b>Excursions</b>	2 per week	
<b>Leisure/cultural activities</b>	2 per week	
<b>Minimum age</b>	50 - no upper limit	
<b>Course duration (weeks)</b>	2 - 4	
<b>Course are held between</b>	6 May - 31 May 11 August - 6 September	
<b>Activities programme</b>		
<b>Excursions, leisure and cultural activities</b>	For detailed information on excursions and activities, please ask for our Club 50+ timetable or visit our website at <a href="http://www.anglo-continental.com/club-50">www.anglo-continental.com/club-50</a>	
<b>Course fees</b>	British Pounds Sterling (£)	
<b>First 2 weeks</b>	1220	
<b>Each additional week</b>	520	
<b>Accommodation fees</b> <small>British Pounds Sterling (£)</small>	<b>Standard homestay - single room</b>	<b>Executive homestay - single room</b>
<b>First 2 weeks</b>	470	700
<b>Each additional week</b>	200	315
 Bed and breakfast available. See page 47		
<b>Door-to-door car service from homestay to course centre</b> <small>British Pounds Sterling (£)</small>		
<b>6 journeys to the course centre from Monday to Saturday</b> <small>(optional - per week)</small>	48	



**These are prices for individual students. Contact us for a group quotation.**

## Course fees include...

- Enrolment fee
- Entry test
- Tuition
- Textbooks and teaching materials
- Virtual learning environment - eAnglo
- Multi-media learning centre for personal study
- Student card
- Certificate of Studies
- Orientation on first day
- Wi-Fi
- Excursions, leisure and cultural activities (including all entrance fees)
- Services of the Student Support team

## Homestay accommodation fees include...

- Single room from the Sunday before course commencement to the Sunday after its completion
- Breakfast Monday to Sunday
- Evening meal Monday to Sunday
- Light lunch Saturday and Sunday
- Hot lunches may be purchased in the Anglo-Continental Student Centre
- Light laundry - once per week
- Wi-Fi

For further details of accommodation see pages 46 - 47.

## Please note

- Students may be integrated into the G-1.20 classes.

## Airport transfers

- See pages 54 - 55.

## Partner programme

Your partner or a friend may come with you to England and participate in the excursions, leisure and cultural activities or the walks without taking the lessons. The programme fees (including VAT) are:

First 2 weeks           £ 710  
Each additional week   £ 315

Homestay accommodation is charged separately.

## Course entry dates 2025 F-1.20

January ~	February ~	March ~	April ~	May 6, 12, 19	June ~	July ~	August 11, 18, 26	September ~	October ~	November ~	December ~
--------------	---------------	------------	------------	------------------	-----------	-----------	----------------------	----------------	--------------	---------------	---------------



# Teacher Training Programme

Anglo-Continental offers teacher training courses designed to develop the knowledge and teaching skills of people who teach English to secondary and adult learners, and also people who are interested in teaching as a career.

The course is designed and led by highly experienced EFL teachers to provide experienced and aspiring teachers with the confidence needed to teach in the world of teaching English.

## Course T-1.20

**20 lessons** per week of language teaching methodology and personal language development. In this course, participants will explore and experience lively and creative teaching strategies and ideas designed to refresh their teaching and to develop and extend their own language proficiency. Contexts for language development work will reflect the interests of the group and will include aspects of British life and culture.



## Additional Information

- Additional entry dates and test dates can be arranged for groups
- Virtual learning environment - eAnglo
- We are a test centre for the University of Cambridge Teaching Knowledge Test (TKT)



Authorised Centre

- For a sample timetable please visit our website at: [www.anglo-continental.com/teacher-training](http://www.anglo-continental.com/teacher-training)

# Language and Methodology of English Teaching 2025

Course number	T-1.20
<b>Teaching methodology, English language development and British life and culture lessons</b>	20
<b>Minimum language levels for entry</b>	Intermediate See note A
<b>CEFR levels for entry</b>	B1 See note A
<b>Class size</b>	Average 10 (Max. 15)
<b>Minimum age</b>	20
<b>Course duration (weeks)</b>	2, 3 or 4
<b>Courses are held between</b>	23 June - 1 August
Course fees*	British Pounds Sterling (£)
<b>First 2 weeks</b>	765
<b>Each additional week</b>	305
Accommodation fees British Pounds Sterling (£)	Standard homestay - single room
<b>First 2 weeks</b>	470
<b>Each additional week</b>	200
<b>High season supplement</b> (15 June to 2 August - per week)	50
<b>Pre-book Saturday excursions</b> (14 June to 16 August - optional per week)	60



\* Inclusive of VAT where applicable.

## Course fees include...

- Enrolment fee
- Pre-training assessment
- Entry test
- Tuition
- Textbooks and teaching materials
- Virtual learning environment - eAnglo
- Multi-media learning centre for personal study
- Educational Advisory Service
- Student card
- Certificate of Studies
- Orientation on first day
- Wi-Fi
- Sports and leisure activities information available online:  
[www.anglo-continental.com/leisure.html](http://www.anglo-continental.com/leisure.html)
- Services of the Student Support team

## Standard homestay accommodation fees include...

- Single room from the Sunday before course commencement to the Sunday after its completion
- Breakfast Monday to Sunday
- Evening meal Monday to Sunday
- Light lunch Saturday and Sunday
- Hot lunches may be purchased in the Anglo-Continental Student Centre
- Light laundry - once per week
- Wi-Fi

For further details of accommodation see pages 46 - 47.

## Please note

- Students may have their lessons either in the morning or in the afternoon on alternate weeks.

## Airport transfers

- See pages 54 - 55.

## Notes

**A** If you would like an indication of your English language level, you can take an online test. This will be used as a guide and final acceptance is subject to our entry test held at the school.

If you are not yet at the minimum level required, you will be transferred to a General English Course. See pages 8 - 10.

## Course entry dates 2025 T-1.20

January	February	March	April	May	June	July	August	September	October	November	December
~	~	~	~	~	23, 30	7, 14, 21	~	~	~	~	~



# Online English Language Programme

## Study English Online with Anglo-Continental

Anglo-Continental's online English language programme offers a wide range of scheduled and specially arranged online courses as a perfect solution for students who need the flexibility of learning English in their own home or office.

Our experienced and fully qualified English language teachers will help each student achieve their learning objectives through live, interactive classes.

The live face-to-face online courses use Zoom technology, which enables each lesson to be fully interactive with daily feedback and guidance.

## Online Courses available

Anglo-Continental offers a variety of online English language courses:

- Group General English Course.
- Group IELTS Preparation Course.
- Group Young Learners General English Course.
- Online one-to-one tuition. These courses can be General English and/or specialised English. If your English level is Intermediate or above, you may focus on specialised individual tuition in the English of your personal choice, selected from the following subjects:
  - Aviation
  - Examination Preparation
  - Medical Practice
  - Business
  - Management
  - Marketing and Sales
  - Legal Practice

If the specialised subject you require is not listed, please contact us to check its availability.



## Online Group General English and IELTS Preparation Courses 2025

Course number	OG-1.04	OX-1.04
<b>Course type</b>	<b>General English</b>	<b>IELTS Preparation</b>
<b>Lessons per week</b> <small>(lesson duration: 60 minutes)</small>	<b>3</b>	<b>3</b>
<b>Language levels</b>	Elementary to Advanced	Intermediate to Advanced
<b>CEFR levels</b>	A1 - C1	B1 - C1
<b>Class size</b>	Average 8 (max.10)	Average 8 (max.10)
<b>Minimum age</b>	16	16
<b>Course duration (weeks)</b>	4 - 60	4 - 16
<b>Course entry dates and lesson times</b>	Visit <a href="http://www.anglo-continental.com/online">www.anglo-continental.com/online</a>	
<b>Course fees</b>	British Pounds Sterling (£)	British Pounds Sterling (£)
<b>First 4 weeks</b>	350	350
<b>Each additional week</b>	50	50

### Course fees include...

- Enrolment fee
- Placement test
- Pre-course training session
- Online Tuition
- Virtual learning environment - eAnglo
- Access to online teaching materials
- Certificate of Studies

## Online Group Young Learners General English Courses 2025

Course number	OYL-1.04
<b>Course type</b>	<b>General English</b>
<b>Lessons per week</b> <small>(lesson duration: 60 minutes)</small>	<b>3</b>
<b>Language levels</b>	Elementary to Advanced
<b>CEFR levels</b>	A1 - C1
<b>Class size</b>	Average 6 (max.8)
<b>Age groups</b>	11 - 16
<b>Course duration (weeks)</b>	4 - 60
<b>Course entry dates and lesson times</b>	Visit <a href="http://www.anglo-continental.com/online">www.anglo-continental.com/online</a>
<b>Course fees</b>	British Pounds Sterling (£)
<b>First 4 weeks</b>	350
<b>Each additional week</b>	50



### Course fees include...

- Enrolment fee
- Placement test
- Pre-course training session
- Online Tuition
- Virtual learning environment - eAnglo
- Access to online teaching materials
- Certificate of Studies

# Online One-to-One English Courses 2025

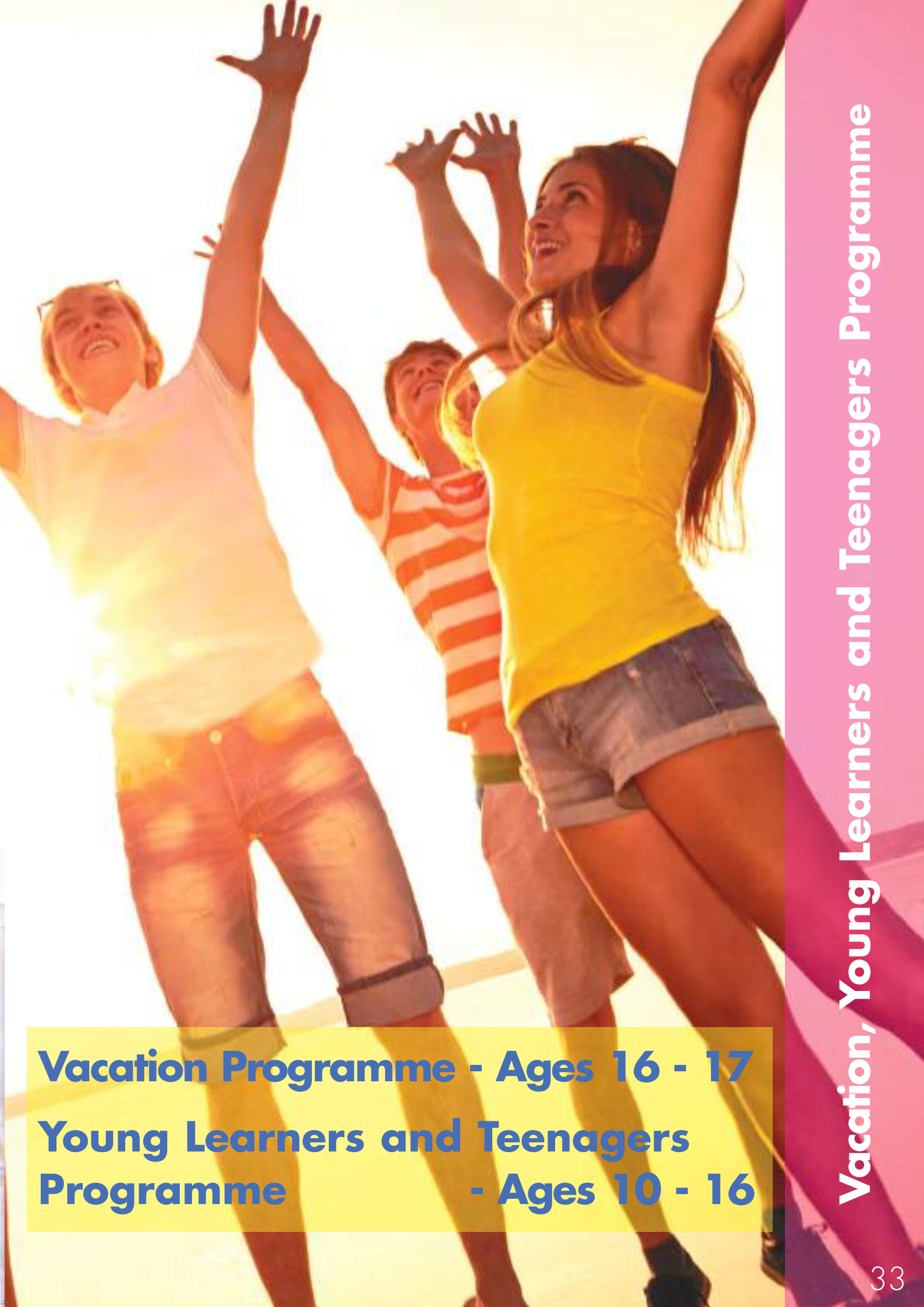
Course number	O-1.04	O-1.08	O-1.20
<b>Course type</b>	<b>One-to-One</b>	<b>One-to-One</b>	<b>One-to-One</b>
<b>Lessons per week</b> (lesson duration: 60 minutes)	<b>3</b>	<b>6</b>	<b>15</b>
<b>Language levels</b>	Elementary to Advanced	Elementary to Advanced	Elementary to Advanced
<b>CEFR levels</b>	A1 - C1	A1 - C1	A1 - C1
<b>Class size</b>	Individual tuition	Individual tuition	Individual tuition
<b>Minimum age</b>	Available for all age groups (10+ years)	Available for all age groups (10+ years)	Available for all age groups (10+ years)
<b>Course duration (weeks)</b>	2 - 60	2 - 60	2 - 60
<b>Course entry dates and lesson times</b>	Visit <a href="http://www.anglo-continental.com/online">www.anglo-continental.com/online</a>		
<b>Specialised individual tuition subjects available</b>	<ul style="list-style-type: none"> <li>• Aviation</li> <li>• Business</li> <li>• Legal Practice</li> </ul>	<ul style="list-style-type: none"> <li>• Examination Preparation</li> <li>• Management</li> </ul>	<ul style="list-style-type: none"> <li>• Medical Practice</li> <li>• Marketing and Sales</li> </ul>
	If the specialised subject you require is not listed, please contact us to check its availability.		
<b>Course fees</b>	British Pounds Sterling (£)	British Pounds Sterling (£)	British Pounds Sterling (£)
<b>4 weeks</b>	1085	1915	4410
<b>Each additional week</b>	210	420	1040

## Course fees include...

- Enrolment fee
- Placement test
- Pre-course training session
- Online Tuition
- Virtual learning environment - eAnglo
- Access to online teaching materials
- Certificate of Studies







**Vacation Programme - Ages 16 - 17**  
**Young Learners and Teenagers**  
**Programme - Ages 10 - 16**

**Vacation, Young Learners and Teenagers Programme**



# Vacation Programme

The Vacation Course consists of 20 lessons per week of General English language lessons.

## **Classes**

Your son/daughter will study in a lively international atmosphere with others whose levels of English are similar. Your son/daughter will be taught by a team of two or three teachers, who encourage participation and interaction between members of the group - and English will be the only language used!

## **Lessons**

Your son/daughter will receive a balanced programme which includes grammar, skills development, and vocabulary development. The classes will be learner-centred. This means that students will take an active part in the classes and will be expected to speak with and listen to fellow students in pairs or small groups.

## **Homework**

Homework forms an integral part of the course.

## **Progress**

Lessons will include a variety of activities including games, quizzes, pair and group work, which will enable the teacher to assess your son/daughter's performance on a weekly basis. If your son/daughter's class reaches the end of a level, a longer test will be given to see if your son/daughter is ready to progress onto the next level.

## **Excursions, Sports and Leisure Activities**

A variety of excursions, sports and leisure activities are a key part of this programme. The excursions and activities are carefully chosen to support continuous language development and to encourage students to practise their English skills outside of the classroom with other international students.



### **One-to-One Online Lessons**

If you wish your child to take online lessons before or after completion of their course please refer to pages 30 - 32.



# January to May

## Vacation Course 2025

<b>Course number</b>	<b>V-1.20</b>
<b>Course type</b>	Vacation Course
<b>Lessons per week</b> <small>(lesson duration: 45 minutes)</small>	20
<b>Language levels</b>	Beginner* to Advanced
<b>CEFR levels</b>	A1* - C1
<b>Class size</b>	Average 13 (max.15)
<b>Full day excursion</b>	1 per week
<b>Daytime leisure activities</b>	5 per week
<b>Age group</b>	16 - 17
<b>Course duration (weeks)</b>	2 - 6
<b>Courses held between</b>	6 January - 15 February 24 March - 3 May
<b>Course fees</b>	British Pounds Sterling (£)
<b>First 2 weeks</b>	1120
<b>Each additional week</b>	470
<b>Accommodation fees</b> <small>British Pounds Sterling (£)</small>	<b>Homestay Twin room</b>
<b>First 2 weeks</b>	660
<b>Each additional week</b>	295
<b>Single room supplement</b> <small>(optional - per week)</small>	30

### Course fees include...

- Enrolment fee
- Entry test
- Tuition
- Teaching materials
- Virtual learning environment - eAnglo
- Student card
- Certificate of Studies
- Orientation on the first day
- Wi-Fi
- Sports and leisure activities. Information available online: [www.anglo-continental.com/vacation](http://www.anglo-continental.com/vacation)
- Excursions (including entrance fees). Information available online: [www.anglo-continental.com/vacation](http://www.anglo-continental.com/vacation)

### Accommodation fees include...

- Twin room from the Sunday before course commencement to the Sunday after its completion
- Light laundry - once per week
- Wi-Fi

### Meals

- A hot lunch from Monday to Friday is taken at the centre. The homestay family will provide a packed lunch for the excursion on Saturday. All other meals are taken with the homestay family.
- Students who do not have homestay accommodation are required to pay £ 50 per week for lunches Monday to Friday.

### Airport transfers

- See pages 54 - 55.

### Please note

- English language lessons and sports/leisure activities may alternate between mornings and afternoons on a weekly basis
- Lessons may be integrated with the General English Course G-1.20.



**These are prices for individual students. Contact us for a group quotation.**

### Course entry dates 2025

<b>V-1.20</b>	January 6*, 13, 20, 27	February 3*	March 24, 31*	April 7, 14, 22	May ~	June ~	July ~	August ~	September ~	October ~	November ~	December ~
---------------	------------------------------	----------------	------------------	--------------------	----------	-----------	-----------	-------------	----------------	--------------	---------------	---------------

\* Beginners may start their courses only on the entry dates marked with asterisks (\*)

## Vacation Course 2025

<b>Course number</b>	<b>V-2.20</b>
<b>Course Type</b>	Vacation Course
<b>Lessons per week</b> <small>(lesson duration: 45 minutes)</small>	20
<b>Language levels</b>	Beginner* to Advanced
<b>CEFR levels</b>	A1* - C1
<b>Class size</b>	Average 13 (max.15)
<b>Daytime leisure activities</b>	5 per week
<b>Full day excursion</b>	1 per week
<b>Age groups</b>	16 - 17
<b>Course duration (weeks)</b>	2 - 10
<b>Courses held between</b>	9 June - 16 August
<b>Course fees</b>	British Pounds Sterling (£)
<b>First 2 weeks</b>	890
<b>Each additional week</b>	355
<b>Accommodation fees</b> <small>British Pounds Sterling (£)</small>	<b>Homestay Twin Room</b>
<b>First 2 weeks</b>	670
<b>Each additional week</b>	300
<b>Single room supplement</b> <small>(optional - per week)</small>	30

### Course fees include...

- Enrolment fee
  - Entry test
  - Tuition
  - Teaching materials
  - Virtual learning environment - eAnglo
  - Student card
  - Certificate of Studies
  - Orientation on the first day
  - Wi-Fi
  - Sports and leisure activities.
- Information available online:  
[www.anglo-continental.com/vacation](http://www.anglo-continental.com/vacation)
- Excursions (including entrance fees).
- Information available online:  
[www.anglo-continental.com/vacation](http://www.anglo-continental.com/vacation)

### Accommodation fees include...

- Twin room from the Sunday before course commencement to the Sunday after its completion
- Light laundry - once per week
- Wi-Fi

### Meals

- A hot lunch from Monday to Friday is taken at the centre. The homestay family will provide a packed lunch for the excursion on Saturday. All other meals are taken with the homestay family.
- Students who do not have homestay accommodation are required to pay £ 50 per week for meals.

### Airport transfers

- See pages 54 - 55.

### Please note

- Lessons may be integrated with the General English Course G-1.20.
- The programme may alternate between mornings and afternoons on a weekly basis.



**These are prices for individual students. Contact us for a group quotation.**

*"It's a kind place with lots of different people from all around the world. I feel more comfortable speaking English now."*  
**Carmen, Spain**

### Course entry dates 2025 V-2.20

January ~	February ~	March ~	April ~	May ~	June 9*, 16, 23*, 30	July 7*, 14, 21*, 28	August 4	September ~	October ~	November ~	December ~
--------------	---------------	------------	------------	----------	----------------------------	----------------------------	-------------	----------------	--------------	---------------	---------------

\* Beginners may start their courses only on the entry dates marked with asterisks (\*)

**All entrance fees are included in the course fees**

## London - sightseeing tour



### Typical full-day excursions:

- London walking tour including sightseeing and shopping
- Windsor including a visit to Windsor Castle
- Longleat Safari Park
- The City of Bath and Stonehenge
- The New Forest National Park and the Wildlife Centre
- Thorpe Park - Theme park with rollercoasters and attractions
- Portsmouth - HMS Victory ship and shopping at Gunwharf Quays
- The University City of Oxford - visit to Magdalen College and shopping
- Bovington Tank Museum and Jurassic Coast
- Weymouth and the Sea Life Centre

### Thorpe Park



### Typical daytime sports and leisure activities:

- |                               |                             |
|-------------------------------|-----------------------------|
| - Walking tour of Bournemouth | - Talent show               |
| - Mini golf                   | - Shopping trips            |
| - Virtual reality centre      | - Themed events             |
| - A variety of sports         | - Indoor games              |
| - Table tennis                | - Silent disco              |
| - Treasure hunt               | - Arts and crafts           |
| - Disco                       | - Beach games               |
| - Quizzes                     | - Ten-pin bowling           |
| - Escape room                 | - British party games       |
| - Photography challenge       | - Laser Quest               |
| - Movie making                | - Dance and drama workshops |
| - Cinema                      | - Karaoke                   |





# IELTS Preparation Vacation Programme

At Anglo-Continental, we have a long successful history in preparing our students for English language examinations. The IELTS Preparation Vacation Course will prepare students for the highly regarded International English Language Testing System (IELTS) examination.

The course is designed to develop the necessary skills relevant to the IELTS examination and to present and practise language appropriate to the students' needs. Timed practice tests provide an idea of what it is like to work under pressure during a real examination.

## IELTS Preparation Courses

Recognised worldwide, IELTS assesses the language ability of candidates who need to study or work where English is the language of communication. Our IELTS Preparation Vacation Courses are intended for those who wish to benefit from preparation for the IELTS test, which includes listening, speaking, reading and writing components.

The course aims to raise the students level of general English by providing 20 lessons per week of intensive English language study, combined with 10 lessons per week of practice for the IELTS examination. Teachers will familiarise students with the format of the examination and will introduce strategies for dealing with typical questions.

## Homework

Homework forms an integral part of the course.

## Excursions

Students will participate in weekend excursions and may choose to join the weekday leisure activity programme. The excursions and activities are carefully chosen to support continuous language development and to encourage students to practise their English skills outside of the classroom with other international students.



**CAMBRIDGE ENGLISH**  
Language Assessment

Authorised Centre



## Notes

**A** If you plan to take an examination, we recommend that you register for the examination in advance. Please check the website for examination closing dates: [www.anglo-continental.com/examination](http://www.anglo-continental.com/examination)

**B** If you would like an indication of your English language level, you can take an online test. This will be used as a guide and final

acceptance is subject to our examination pre-test or our entry test held at the school.

If you have not yet reached the required level, you can first enrol for a period of preparation on a General English Course. See pages 8 - 10.

June  
July  
August

## IELTS Preparation Vacation Course 2025

<b>Course number</b>	<b>V-4.30</b>
<b>Course type</b>	IELTS Examination Practice + Vacation Course
<b>Examination board</b>	Cambridge English Language Assessment and the British Council See note A (page 38)
<b>Examination Practice lessons</b>	10
<b>General English lessons</b>	20
<b>Total lessons per week</b> <small>(lesson duration: 45 minutes)</small>	<b>30</b>
<b>Language levels for entry</b>	Pre-Intermediate See note B (page 38)
<b>CEFR levels for entry</b>	A2 See note B (page 38)
<b>Examination Practice class size</b>	Average 8 (Max. 12)
<b>General English class size</b>	Average 13 (Max. 15)
<b>Full day excursion</b>	1 per week
<b>Age group</b>	16 - 17
<b>Course duration (weeks)</b>	2 - 9
<b>Courses are held between</b>	16 June - 16 August
<b>Course fees</b>	British Pounds Sterling (£)
<b>First 2 weeks</b>	1170
<b>Each additional week</b>	470
<b>Accommodation fees</b> British Pounds Sterling (£)	<b>Homestay Twin Room</b>
<b>First 2 weeks</b>	670
<b>Each additional week</b>	300
<b>Single room supplement</b> <small>(optional - per week)</small>	30

### Course fees include...

- Enrolment fee
  - Entry test
  - Tuition
  - Teaching materials
  - Virtual learning environment - eAnglo
  - Student card
  - Multi-media learning centre for personal study
  - Educational advisory service
  - Certificate of Studies
  - Orientation on the first day
  - Wi-Fi
  - Sports and leisure activities.
- Information available online:  
[www.anglo-continental.com/vacation](http://www.anglo-continental.com/vacation)
- Excursions (including entrance fees).
- Information available online:  
[www.anglo-continental.com/vacation](http://www.anglo-continental.com/vacation)

### Accommodation fees include...

- Twin room from the Sunday before course commencement to the Sunday after its completion
- Light laundry - once per week
- Wi-Fi

### Meals

- A hot lunch from Monday to Friday is taken at the centre. The homestay family will provide a packed lunch for the excursion on Saturday. All other meals are taken with the homestay family.
- Students who do not have homestay accommodation are required to pay £ 50 per week for meals.

### Examination fees

- The examination fees 2025 are not included in the course fees. They are published on the website from October 2024.

### Airport transfers

- See pages 54 - 55.

### Please note

- Lessons may be integrated with the General English Course G-1.20
- The programme may alternate between mornings and afternoons on a weekly basis.

These are prices for individual students. Contact us for a group quotation.



### Course entry dates 2025 V-4.30

January ~	February ~	March ~	April ~	May ~	June 16, 30	July 14, 28	August ~	September ~	October ~	November ~	December ~
--------------	---------------	------------	------------	----------	----------------	----------------	-------------	----------------	--------------	---------------	---------------



# English for Young Learners and Teenagers Programme

The Young Learners English language and activity course consists of 20 General English language lessons per week.

## Classes

Your son/daughter will study in a lively international atmosphere with others whose levels of English are similar. Your son/daughter will be taught by a team of two teachers, who encourage participation and interaction between members of the group - and English will be the only language used!

## Lessons

The lessons will be stimulating and effective, with a variety of activities to develop your son/daughter's confidence, knowledge and skills:

- lively presentation and practice of new language
- rapid development of oral fluency, accuracy and conversation skills
- systematic development of listening, reading and writing skills
- extension of vocabulary, structure and usage

## Excursions, Sports and Leisure Activities

A wide variety of excursions, sports and leisure activities are an integral part of the programme. Students develop their language during activities and excursions using quizzes and worksheets about the destination or activity. Excursions and activities are also followed up in class and students are encouraged to develop language through their experiences.



### One-to-One Online Lessons

If you wish your child to take online lessons before or after completion of their course please refer to pages 30 - 32.



## Safety and Student Support

The safety and wellbeing of our students is one of our top priorities.

Anglo-Continental has fully trained staff and facilities to provide a high standard of student support, safety and first aid.

Anglo-Continental operates a 24/7 helpline for emergencies.

Telephone:

(GB code) +(0)1202 55 74 14  
or (GB code) +(0)78 3161 3193  
(out of office hours only).



# January to May

## English Language and Activity Course 2025

<b>Course number</b>	<b>C-1.20</b>	
<b>Course type</b>	English Language and Activity Course	
<b>Lessons per week</b> <small>(lesson duration: 45 minutes)</small>	20	
<b>Language levels for entry</b>	Beginner* to Advanced	
<b>CEFR levels for entry</b>	A1* - C1	
<b>Class size</b>	Average 13 (max.15)	
<b>Full day excursions</b>	1 per week	
<b>Daytime leisure activities</b>	5 per week	
<b>Age groups</b>	10 - 16	
<b>Course duration (weeks)</b>	2 - 6	
<b>Courses held between</b>	6 January - 15 February 24 March - 3 May	
<b>Course fees</b>	British Pounds Sterling (£)	
<b>First 2 weeks</b>	1120	
<b>Each additional week</b>	470	
<b>Accommodation fees</b> British Pounds Sterling (£)	<b>Homestay Twin Room</b> Age: 10 - 13	<b>Homestay Twin Room</b> Age: 14 - 16
<b>First 2 weeks</b>	852	660
<b>Each additional week</b>	391	295
<b>Supervised door-to-door car service to/from centre</b> 6 return journeys per week	<b>Included</b>	Optional 96 per week

### Course fees include...

- Enrolment fee
- Entry test
- Tuition
- Teaching materials
- Student card
- Certificate of Studies
- Orientation on the first day
- Wi-Fi
- Sports and leisure activities. Information available online: [www.anglo-continental.com/young-learners](http://www.anglo-continental.com/young-learners)
- Excursions (including entrance fees). Information available online: [www.anglo-continental.com/young-learners](http://www.anglo-continental.com/young-learners)

### Accommodation fees include...

- Twin room from the Sunday before course commencement to the Sunday after its completion
- Light laundry - once per week
- Wi-Fi

### Meals

- A hot lunch from Monday to Friday is taken at the centre. The homestay family will provide a packed lunch for the excursion on Saturday. All other meals are taken with the homestay family.
- Students who do not have homestay accommodation are required to pay £ 50 per week for meals and supervision.

### Airport transfers

- See pages 54 - 55.

### Please note

- English language lessons and sports/leisure activities may alternate between mornings and afternoons on a weekly basis.



**These are prices for individual students. Contact us for a group quotation.**

*"Every activity was great fun and it helped us to understand English better."*  
**Diego, Argentina**

### Course entry dates 2025

#### C-1.20

January 6*, 13, 20, 27	February 3*	March 24, 31*	April 7, 14, 22	May ~	June ~	July ~	August ~	September ~	October ~	November ~	December ~
------------------------------	----------------	------------------	--------------------	----------	-----------	-----------	-------------	----------------	--------------	---------------	---------------

\* Beginners may start their courses only on the entry dates marked with asterisks (\*)

**June**  
**July**  
**August**

## English Language and Activity Course 2025

<b>Course number</b>	<b>C-2.20</b>	
<b>Course Type</b>	English Language and Activity Course	
<b>Lessons per week</b> <small>(lesson duration: 45 minutes)</small>	20	
<b>Language levels</b>	Beginner* to Advanced	
<b>CEFR levels</b>	A1* - C1	
<b>Class size</b>	Average 13 (max.15)	
<b>Full day excursions</b>	1 per week	
<b>Daytime leisure activities</b>	5 per week	
<b>Age groups</b>	10 - 16	
<b>Course duration (weeks)</b>	2 - 10	
<b>Courses held between</b>	9 June - 16 August	
<b>Course fees</b>	British Pounds Sterling (£)	
<b>First 2 weeks</b>	1180	
<b>Each additional week</b>	500	
<b>Accommodation fees</b> <small>British Pounds Sterling (£)</small>	<b>Homestay Twin Room</b> <small>Age: 10 - 13</small>	<b>Homestay Twin Room</b> <small>Age: 14 - 16</small>
<b>First 2 weeks</b>	1002	810
<b>Each additional week</b>	466	370
<b>Supervised door-to-door car service to/from centre</b> <small>6 return journeys per week</small>	<b>Included</b>	Optional 96 per week

### Course fees include...

- Enrolment fee
  - Entry test
  - Tuition
  - Teaching materials
  - Student card
  - Certificate of Studies
  - Orientation on the first day
  - Wi-Fi
  - Sports and leisure activities.
- Information available online:  
[www.anglo-continental.com/young-learners](http://www.anglo-continental.com/young-learners)
- Excursions (including entrance fees).
- Information available online:  
[www.anglo-continental.com/young-learners](http://www.anglo-continental.com/young-learners)

### Accommodation fees include...

- Twin room from the Sunday before course commencement to the Sunday after its completion
- Light laundry - once per week
- Wi-Fi

### Meals

- A hot lunch from Monday to Friday is taken at the centre. The homestay family will provide a packed lunch for the excursion on Saturday. All other meals are taken with the homestay family.

- Students who do not have homestay accommodation are required to pay £ 50 per week for meals and supervision.

### Airport transfers

- See pages 54 - 55.

### Please note

- English language lessons and sports/leisure activities may alternate between mornings and afternoons on a weekly basis.

**These are prices for individual students. Contact us for a group quotation.**



### Course entry dates 2025

#### C-2.20

January ~	February ~	March ~	April ~	May ~	June 9*, 16, 23*, 30	July 7*, 14, 21*, 28	August 4	September ~	October ~	November ~	December ~
--------------	---------------	------------	------------	----------	----------------------------	----------------------------	-------------	----------------	--------------	---------------	---------------

\* Beginners may start their courses only on the entry dates marked with asterisks (\*)

**All entrance fees are included in the course fees**



London Sightseeing Tour

### Typical full-day excursions:

- London walking tour including sightseeing and shopping
- Windsor including a visit to Windsor Castle
- Longleat Safari Park
- The City of Bath and Stonehenge
- The New Forest National Park and the Wildlife Centre
- Thorpe Park - Theme park with rollercoasters and attractions
- Portsmouth - HMS Victory ship and shopping at Gunwharf Quays
- The University City of Oxford - visit to Magdalen College and shopping
- Bovington Tank Museum and Jurassic Coast
- Weymouth and the Sea Life Centre



The Roman City of Bath

### Typical sports and creative leisure activities:

- Walking tour of Bournemouth
- Mini golf
- Virtual reality centre
- A variety of sports
- Table tennis
- Treasure hunt
- Disco
- Quizzes
- Escape room
- Photography challenge
- Movie making
- Cinema
- Summer fete
- Talent show
- Shopping trips
- Themed events
- Indoor games
- Silent disco
- Arts and crafts
- Beach games
- Ten-pin bowling
- British party games
- Laser Quest
- Dance and drama workshops
- Karaoke





# Parent and Child Supplement

Anglo-Continental is pleased to offer English language programmes to parents who wish to study English or simply observe and attend the activities and excursions with their child attending a Young Learners or Young Adult Course.

## Parent and Child Supplement (Young Learners Courses)

We can arrange for parents to participate in the Young Learners Programme as follows:

- Attend three activities with your child per week;
- Observe two activities per week;
- Attend one excursion with your child per week;
- Lunch with your child at the school Monday to Friday.

## English Language Courses for the Parent

With our extensive range of English language courses for adults of all levels from General English, Business and Specialised English to Professional and Executive English language programmes the parent (or grandparent) can improve their English while their child (or grandchild) follows their own English language programme with activities and excursions.

## English Language Courses for Young Learners (10 - 16)

Young Learners (aged 10 to 16 years) have a choice of English language programmes in January, March and April as well as in June, July and August.

## English Language Courses for Young Adults (16+)

Young adults (aged 16+ years) have a choice of English language programmes throughout the year. Please refer to this prospectus or visit our website [www.anglo-continental.com/young-learners](http://www.anglo-continental.com/young-learners) for details of all courses for children and young adults.

## Accommodation

We can arrange the same homestay accommodation for parents and children or, if preferred, accommodation can also be arranged with separate homestay families. Alternative accommodation arrangements can also be arranged for parents and children in hotels, guest houses or flats. Please visit our website [www.anglo-continental.com/accommodation-options](http://www.anglo-continental.com/accommodation-options) for details of accommodation and alternative accommodation options.



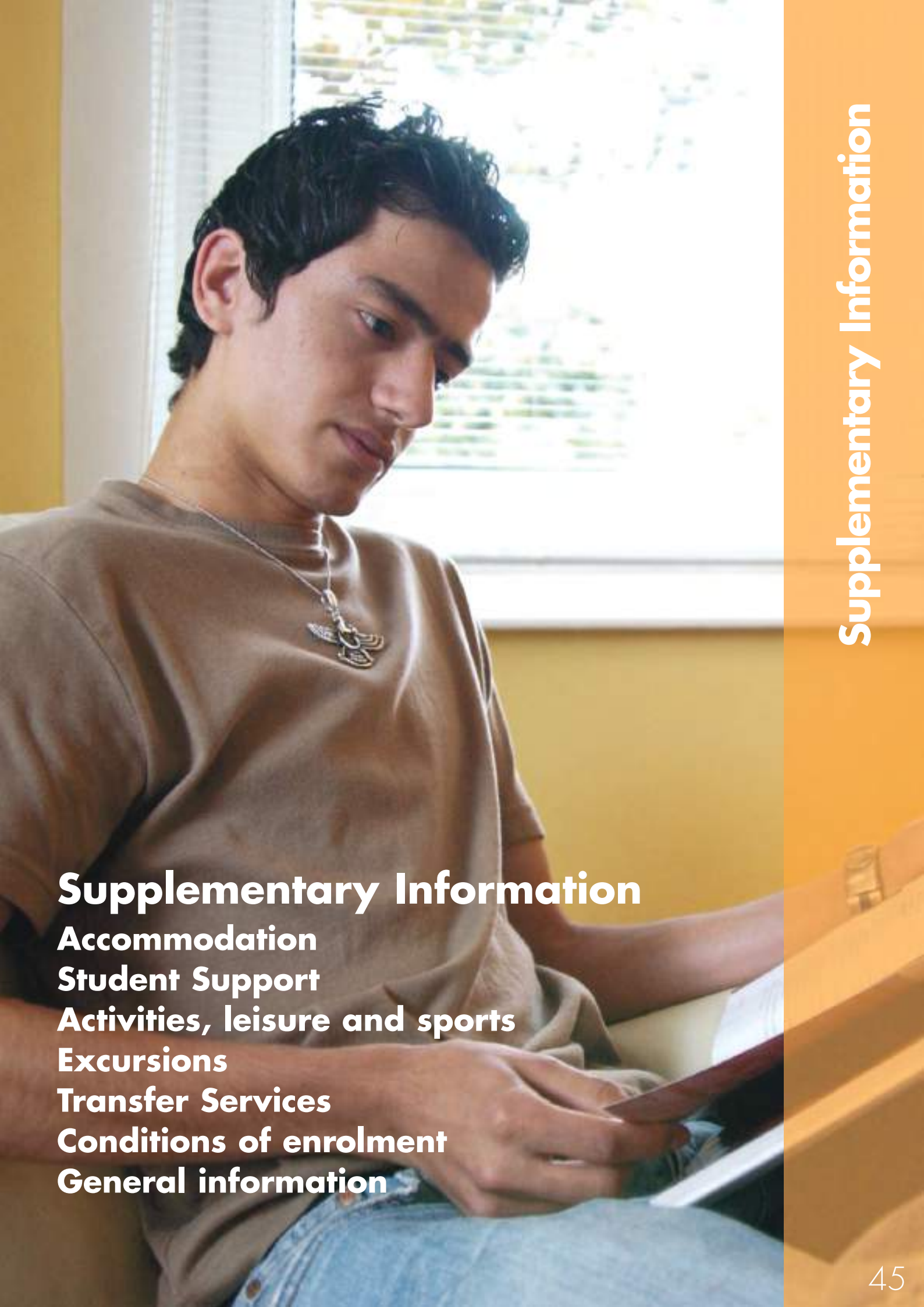
**Parents can study on the same campus as their child**



### Parent and Child Supplement (per week)

British Pounds Sterling (£)

<b>Young Learners C-1.20</b>	175
<b>Young Learners C-2.20</b>	185
<b>Vacation V-1.20</b>	175
<b>Vacation V-2.20</b>	100
<b>IELTS Preparation Vacation V-4.30</b>	100



## **Supplementary Information**

**Accommodation**

**Student Support**

**Activities, leisure and sports**

**Excursions**

**Transfer Services**

**Conditions of enrolment**

**General information**



# Accommodation

## Selection of homestay accommodation

Through careful homestay accommodation selection, we ensure that you are comfortable and well looked after during your course. All homestays registered with Anglo-Continental are regularly checked by our staff and evaluated by our students, to ensure that quality remains at a high standard. No more than three other students are accommodated in each homestay.

Anglo-Continental homestay accommodation is walking distance or a short bus journey from the school. The average journey time is 30 minutes. A weekly bus pass costs approximately £19.

## Why stay in a homestay accommodation?

- Your host family will make you feel welcome and will help you with any concerns during your stay.
- You will enhance the language and cultural experience of your stay in England by living with a host family.
- You will be treated like a member of the family.
- Your host family will make time to speak with you at meal times and will invite you for a chat over a cup of tea. This is a great way to advance your English outside of the classroom.
- Your host family will also help you with practical matters such as how to get to school on your first day.

## Important notice - students under 18 years

In accordance with British Council recommendations, we check that your host is suitable to accommodate students under 18 years of age by using the Disclosure and Barring Service (DBS).

### Standard homestay accommodation includes:

- A pleasantly furnished single bedroom for students aged 18+. Twin room for students aged 16-17.
- Shared shower or bathroom and toilet facilities.
- 16 meals per week.
- Bed linen and towels are provided weekly.
- A supply of duvets and blankets are available.
- A light laundry service (one load per week).
- Wi-Fi.

### Standard homestay accommodation with private bathroom (Age 18+ only) includes:

- Same as standard homestay accommodation plus
- Exclusive use of a shower or bathroom and toilet facilities.

### Executive homestay accommodation (Age 18+ only) includes:

For students attending the Executive Programme, Business and Specialised, Aviation and Club 50+ Programmes:

- Same as Standard Homestay Accommodation with private bathroom  
Plus
- A spacious, comfortably furnished bedroom
  - Our executive hosts provide an enhanced standard of hospitality and comfort

### Young Learner, Teenager and Vacation homestay accommodation includes:

- A pleasantly furnished single/twin room.
- Shared shower or bathroom and toilet facilities.
- A hot lunch from Monday to Friday is taken at the school. All other meals are taken with the homestay family.
- Bed linen and towels are provided weekly.
- A supply of duvets and blankets are available.
- A light laundry service (one load per week).
- Wi-Fi.

*"I thoroughly enjoy looking after students and have learnt so many interesting things and met some wonderful people. One of the most important aspects to hosting students is to eat with the students as much as possible in order to get to know them properly and make them feel welcome."*

**Mrs Langley, Homestay**

### Adult Homestay Accommodation Fees 2025 British Pounds Sterling (£)

	<b>Standard - 16-17</b> <b>Twin Room</b> <b>Shared Bathroom</b>	<b>Standard - 18+</b> <b>Single Room</b> <b>Shared Bathroom</b>	<b>Standard - 18+</b> <b>Single Room</b> <b>Private Bathroom</b>	<b>Executive - 18+</b> <b>Single Room</b> <b>Private Bathroom</b>	<b>Bed and breakfast</b> <b>18+ Single Room</b> <b>Shared Bathroom</b>
<b>First week</b>	270	270	325	385	255
<b>Each additional week</b>	200	200	255	315	185
<b>High season supplement</b> (15 June to 2 August - per week)	50	50	50	50	50
<b>Single room supplement</b> (optional - per week)	30	~	~	~	~
<b>Special diet supplement</b> (optional - per week)	35	35	35	35	10

### Young Learner/Vacation Homestay Accommodation Fees 2025 British Pounds Sterling (£)

	<b>C-1.20</b> <b>Twin Room</b> <b>Shared Bathroom</b>		<b>C-2.20</b> <b>Twin Room</b> <b>Shared Bathroom</b>		<b>V-1.20</b> <b>Twin Room</b> <b>Shared Bathroom</b>	<b>V-2.20/V-4.30</b> <b>Twin Room</b> <b>Shared Bathroom</b>
	<b>Age 10-13</b>	<b>Age 14-16</b>	<b>Age 10-13</b>	<b>Age 14-16</b>	<b>Age 16-17</b>	<b>Age 16-17</b>
<b>First week</b>	461	365	536	440	365	370
<b>Each additional week</b>	391	295	466	370	295	300
<b>Supervised door-to-door car service to/from centre</b> 6 return journeys per week	<b>Included</b>	96 optional	<b>Included</b>	96 optional	~	~
<b>Guardianship fee</b> for under 16's studying for 4 weeks or more (per week)	40	40	40	40	~	~
<b>Single room supplement</b> (optional - per week)	30	30	30	30	30	30
<b>Special diet supplement</b> (optional - per week)	35	35	35	35	35	35

#### Alternative accommodation

Alternative accommodation can be arranged on request for students over the age of 18 years:

- Student hotel accommodation
- Hotel
- Guest houses
- Bed and breakfast

- University residence

- Flats and apartments

Reservations made through Anglo-Continental are subject to a non-refundable administration fee of 5% of the total booking fee per room (minimum £25). Further details and suggested establishments are available on our website: [www.anglo-continental.com/alternative.html](http://www.anglo-continental.com/alternative.html)



# Student Support

## Counselling service

When you are away from home, problems can arise. Most of these are easily solved with the help of our Student Services staff.

Our Student Support staff provide a confidential and discreet service for problems of a delicate or sensitive nature. The Student Support Team has a wealth of experience in dealing with international students and the variety of problems that might arise.

From your first contact with us to your last day at Anglo-Continental, we will give you all the help you need.

## Students under 18 years of age

Anglo-Continental closely monitors students under 18 years of age. Any unauthorised absence is looked into by our Student Services staff. On the first day of school our Student Support Officer meets with new students under 18 years of age on Adult Courses to ensure that they are aware of the Anglo-Continental guidelines for students under 18. These students will also be asked to sign a statement to confirm that they understand and will follow these guidelines.

Anglo-Continental

Anglo-Conti







## Safety and student support

The safety and wellbeing of our students is one of our top priorities. Anglo-Continental has fully trained staff and facilities to provide a high standard of student support, safety and first aid.

- Experienced, caring and approachable staff.
- British Council approved staff to student ratios. A high level of supervision for Young Learners.
- 24 hour supervision for students aged 13 and under.
- Door-to-door private car service for Young Learners. All drivers are checked with the Disclosure and Barring Service (DBS).
- The Young Learner/Teenager Courses are run in a secure building with special dedicated facilities solely used for the younger age groups.
- Students under 18 years of age are strictly monitored and any unauthorised absence is followed up by our staff.
- Private fostering families provide extra support for long-term students under the age of 16.
- Fully qualified and experienced first aid staff and a dedicated first aid room.





# Activities, leisure & sports

## Leisure

Bournemouth has all the leisure and entertainment facilities of a leading holiday resort:

- Cinemas and theatres with films and plays of every kind
- Concerts, exhibitions and other events of international calibre such as the Air Festival, One World by the Sea Festival, Food and Drink Festival and Arts by the Sea
- Every kind of music - including the famous Bournemouth Symphony Orchestra
- An exceptional choice of pubs, clubs and lively places of entertainment

## Sports (some at extra cost)

You can select from a wide choice of sports activities:

- Every kind of water sport, including sailing, water-skiing, surfing and windsurfing in Bournemouth Bay or in Poole Harbour, Europe's largest natural harbour
- Swimming in the sea or in a choice of indoor pools
- Team games, such as football, volleyball and basketball
- Tennis, badminton, bowls and ten-pin bowling
- Gymnastics, squash, fitness training or martial arts
- Horse riding in the nearby New Forest National Park
- Golf - at a choice of excellent courses in Bournemouth





### Social Activity Programme

Students aged 16 and over can participate in Anglo-Continental's social activity programme. Activities are free unless stated otherwise. Activities include the English language conversation club, the popular football club, Bournemouth walking tour, beach games and a variety of other sports and leisure activities.

### Timetables

Download the social activity programme timetables: [www.anglo-continental.com/leisure.html](http://www.anglo-continental.com/leisure.html)

All course and activity timetables can be found on the website: [www.anglo-continental.com](http://www.anglo-continental.com)

### Social Activities Programme for Students Aged 16+ Typical Timetable

MONDAY	TUESDAY	WEDNESDAY	THURSDAY	FRIDAY
 01 Games Social	 02 Boxercise or T-Shirt Painting	 03 Board Games	 04 Volleyball or Plant Design	 05 Beach Picnic
 08 Bingo	 09 Dodgeball Tournament or Bracelet Making	 10 Movie Trivia	 11 Table Football Tournament or Reed Diffuser Making	 12 Mini Golf
 15 Movie Club	 16 Boot Camp or Origami	 17 Is it Cake?	 18 Football or Egg Parachutes	 19 British High Tea
 22 Sports Trivia	 23 Badminton or Bath Bombs	 24 Games Social	 25 Beach Games or Giving Back	 26 Axe Throwing
 29 Table Tennis Tournament	 30 Football or Baking	 31 Games Social		



# Excursions

**The Roman City of Bath**



**Saturday  
Excursions**

Available for adult students to pre-book 14 June to 16 August 2025 for the duration of the course.



**Stratford-upon-Avon**



**Excursions**

At Anglo-Continental, we give you every opportunity to see the sights of Southern England. Throughout the year, we offer an extensive choice of guided excursions to interesting towns and cities, historic castles and stately homes, safari parks and areas of outstanding natural beauty. You can visit the great landmarks of London, go shopping in Oxford Street or see the world's leaders in the waxworks at Madame Tussaud's. You can visit the university city of Oxford or look around Winchester, the ancient capital of England. You can see the famous Lions of Longleat, Stratford-upon-Avon, Warwick Castle and many other fascinating places, according to your choice.

Visits and excursions are arranged to events of special interest, such as air displays, exhibitions and international sports fixtures, as they occur. Whatever your preferences, you will probably find them featured in the excursion programme.



**Poole Harbour**



# Transfer services 2025

Anglo-Continental Coach Transfer

**Recommended Option**



**Anglo-Continental's coach transfer services**

**On Arrival**

- meet and greet at London Heathrow
- escorted transfer to school
- car to accommodation

**On Departure**

- car from accommodation to school
- escorted transfer to London Heathrow

**Reservation and confirmation** of flight details are required no later than 10 days in advance.

London Heathrow Airport (LHR) to Accommodation			Charge per person
June 8, 15, 22, 29	July 6, 13, 20, 27	August 3	£ 75

**Day:** Sunday  
**Time:** Coaches depart between 08.00 to 20.00 hours.  
For flights arriving between 08.00 to 18.00 hours.

Accommodation to London Heathrow Airport (LHR)			Charge per person
June 22, 29	July 6, 13, 20, 27	August 3, 10, 17	£ 75

**Day:** Sunday  
**Time:** Coaches depart between 05.00 to 16.00 hours.  
For flights departing between 10.00 to 20.00 hours.

**Check-in Service for students on the Young Learners Programme**  
Courses C-2.20

A member of our team will check-in your child and accompany him/her to security. If you have pre-arranged Unaccompanied Minor services our team member will hand your son/daughter to the airline representative.

£ 90

Anglo-Continental Car Transfer



**Anglo-Continental Car Transfer Services**

Anglo-Continental offers a personal meet and greet service from any location in Great Britain at any time and on any day. You will be driven directly and comfortably to the destination.

You may be sharing a car with another student.

**Reservation and confirmation** of flight details are required no later than 10 days in advance.

Anglo-Continental Car Transfer Services Charges 2025 per single journey	
From/To	1 person
London Heathrow	£ 220
London Gatwick	£ 245
London City	£ 345
London Centre	£ 330
London Stansted	£ 325
London Luton	£ 265
Southampton Airport	£ 125
Bournemouth Airport	£ 80

**Day:** Any day  
**Time:** Any time  
**Waiting time:** The first 2 hours of waiting time are free of charge.  
Extra waiting time is charged at £ 55 per 30 minutes.  
**Charge for second passenger travelling in the same car:** £ 22

**Check-in Service for students on the Young Learners Programme**  
Courses C-1.20 and C-2.20

A member of our team will check-in your child and accompany him/her to security. If you have pre-arranged Unaccompanied Minor services our team member will hand your son/daughter to the airline representative.

£ 90

Public Transfer Services



**National Express Coaches and Megabus**

National Express and Megabus provide coach services to the public. There are frequent services throughout the day, every day of the year and services from London Heathrow are direct to the Bournemouth Interchange.

You will need to take a taxi from the coach station to your accommodation. For full details of these services, current timetables and prices please visit [www.nationalexpress.com](http://www.nationalexpress.com) and <https://uk.megabus.com>

**Day:** Any day  
**Time:** Coaches depart regularly throughout the day.



**National Rail**

Train services from London Waterloo and Southampton Airport Parkway are direct and available every day of the year. Other airports are served by trains but are not direct and may involve a coach or the underground depending on the particular airport. You will need to take a taxi from Bournemouth railway station to your accommodation. For full details of their services, current timetables and prices please visit [www.nationalrail.co.uk](http://www.nationalrail.co.uk)

# Anglo-Continental transfer information

## Reservation

Anglo-Continental car and coach transfers must be booked no later than 10 working days before the date of arrival, stating:

- Name
- Mobile telephone number
- Student reference number
- Date of arrival
- Time of arrival
- Flight number
- Airport of departure
- Airport of arrival
- Details of connecting flight if applicable

## Payment

Payment for transfers must be made before the date of provision of the service. Any additional charges, such as delayed arrival, must be paid on the first day of school.

## Arrival at the airport

When you leave the Customs Hall, look for our Representative carrying a sign with the name of the school.



Full details of the meeting point are given in the confirmation documents.

## Luggage allowance - car and coach transfers

Your free allowance is one piece of luggage of a standard size and shape weighing not more than 23kg, plus one item of hand luggage of not more than 10kg.

If your luggage does not conform with the above, an additional charge may have to be made. It is important that you advise us in advance if there is excess baggage so we can make appropriate arrangements, otherwise you may find that the excess luggage cannot travel with you and there may be additional charges.

## Delayed arrival - car transfers

The driver will wait for 2 hours from the advised arrival time. If you are delayed further, for whatever reason, the driver will wait for up to an additional 2 hours and you will be charged £ 55 per 30 minutes. Any additional charges must be paid on the first day of school.

## Possible waiting times for coach transfers

It is our aim to transfer you to Bournemouth as soon as possible after meeting our representative. However, Anglo-Continental cannot be held responsible for delays caused by

late arrival of incoming flights, congestion at UK Border Control, hold-ups at Customs or heavy traffic on the roads or any other event.

## Young Learners travelling alone

If your son/daughter is under 16 years of age and is travelling without an adult, the transfer service and check-in service will automatically be reserved and invoiced. We advise you to check with the airline for rules and regulations regarding this. You will be responsible for any unaccompanied child airline service charges. On departure, a member of our team will take your child to the check-in counter and check him/her onto the flight and accompany him/her to security.

## Transfers on British public holidays

Transfers on British public holidays may have a surcharge; please contact us for a special price.

## Cancellation

Notice of cancellation or change of a transfer must be received in writing by the school before 12.00 hours (British Time) on the Wednesday prior to the scheduled day of arrival or departure. If such notice is not received within the period stipulated, we incur obligations to the transport companies and therefore the full charge must be paid.

